



**ASSOCIATED GUN CLUBS OF BALTIMORE, INC.  
PATAPSCO RANGES**

**LEGISLATIVE OFFICE**

P.O. BOX 20102 • TOWSON, MD 21284-0102 • 410-296-3947  
WWW.ASSOCIATEDGUNCLUBS.ORG • E-MAIL: AGCBALTO@BCPL.NET

**Homicide in Maryland  
1975 - 2000  
A Compilation of Statistical Data  
March 12, 2002**

**Data Sources:**

Maryland Uniform Crime Reports 1975-2000  
Maryland State Police

The Texas Crime Reports 1999-2000  
Texas Department of Public Safety

FBI Uniform Crime Reports 1975-2000  
Federal Bureau of Investigation

John H. Josselyn  
Legislative Vice President  
Associated Gun Clubs of Baltimore, Inc.

## **Introduction**

The data in this work is taken directly and unedited from the referenced sources. This study covers the 26-year period from 1975 through 2000. The year **1988** marked the beginning of the Maryland General Assembly's effort to enact ever more restrictive gun control laws, and in the years that followed passed no less than 7 major gun control laws.

Not unexpectedly, the use of weapons in homicides roughly parallels the Maryland homicide rate and the Maryland homicide rate trends generally reflect the national homicide rate trends though at a much higher rate. The passage of various gun control laws does not coincide with any corresponding decline in Maryland homicides. In many years, homicides increased following the passage of additional gun control laws. The recent rapid decline in Maryland homicides noted in 2000 occurred primarily in Baltimore City. This decline in homicides dovetails with the adoption of new strategies and tactics instituted by Baltimore City Police Commissioner Edward Norris following his confirmation in the Spring of 2000.

It should be noted that not only is Maryland defined by Handgun Control Inc. as a "heavily regulated" state, it is the only state in the nation awarded a gun control law "A" rating by Handgun Control, Inc.

John H. Josselyn  
Legislative Vice President  
March 12, 2002

# Table of Contents

## Graphs

**Homicide - State National - HCI:** depicts the *per capita* homicide rates for Maryland, the United States and the four states that are contiguous to Maryland: Pennsylvania, Delaware, Virginia and West Virginia for the period from 1975 through 2000. The state color key also shows the Handgun Control Inc. gun law rating (A-F) for each of the states shown in the graph. The ratings indicated are taken from data published on Handgun Control Inc.'s Internet web site and are shown in the final page of this publication.

**MD UCR 88-00:** graph of weapons used in homicides for the 13-year period from 1988 through 2000.

**MD Homicide Weapons - Homicide Rates:** a graphic depiction of the data shown in the previous graph with the Maryland and United States homicide rates in dotted lines to demonstrate that weapons use essentially follows the homicide rate. It also shows that in general, Maryland's homicide rate while much higher than the national rate still follows the national trend but with a 2-year delay.

**MD -National-TX Homicide 88-00:** a graphic depiction of homicide rates in Maryland, Texas and the entire United States for the period from 1988 through 2000. Texas was chosen for comparison due the allegations by the Violence Police Center that "shall issue" concealed weapons laws increase crime.

## Data Charts

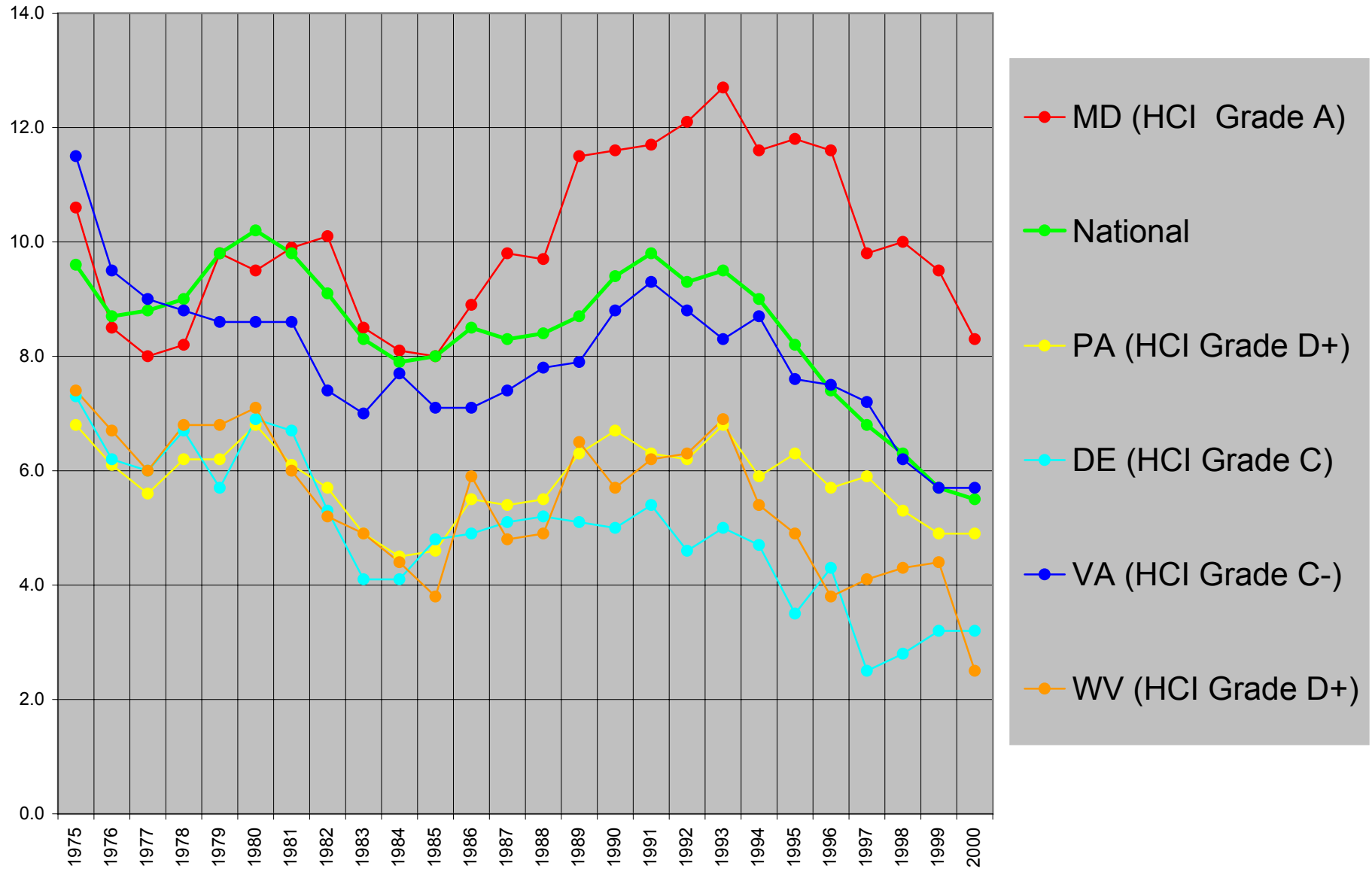
**MD Homicide UCR 75-00 A:** chart showing homicide data by year for the period from 1975 through 2000, number of arrests, demographic and weapons data shown as actual numbers, and totals and averages for 26 year period.

**MD Homicide UCR 75-00 B:** chart showing homicide data by year for the period from 1975 through 2000, the number of homicides, homicide rates, number of arrests, demographic and weapons data shown as percentages, and totals for the 26-year period.

**MD Homicide UCR 75-00 C:** chart showing homicides, totals, average number of homicides and percentages of the state homicide totals by county for the 26 year period from 1975 through 2000, the 13 year "pre gun control" period from 1975-1987, and the 13 year "gun control" period from 1988-2000.

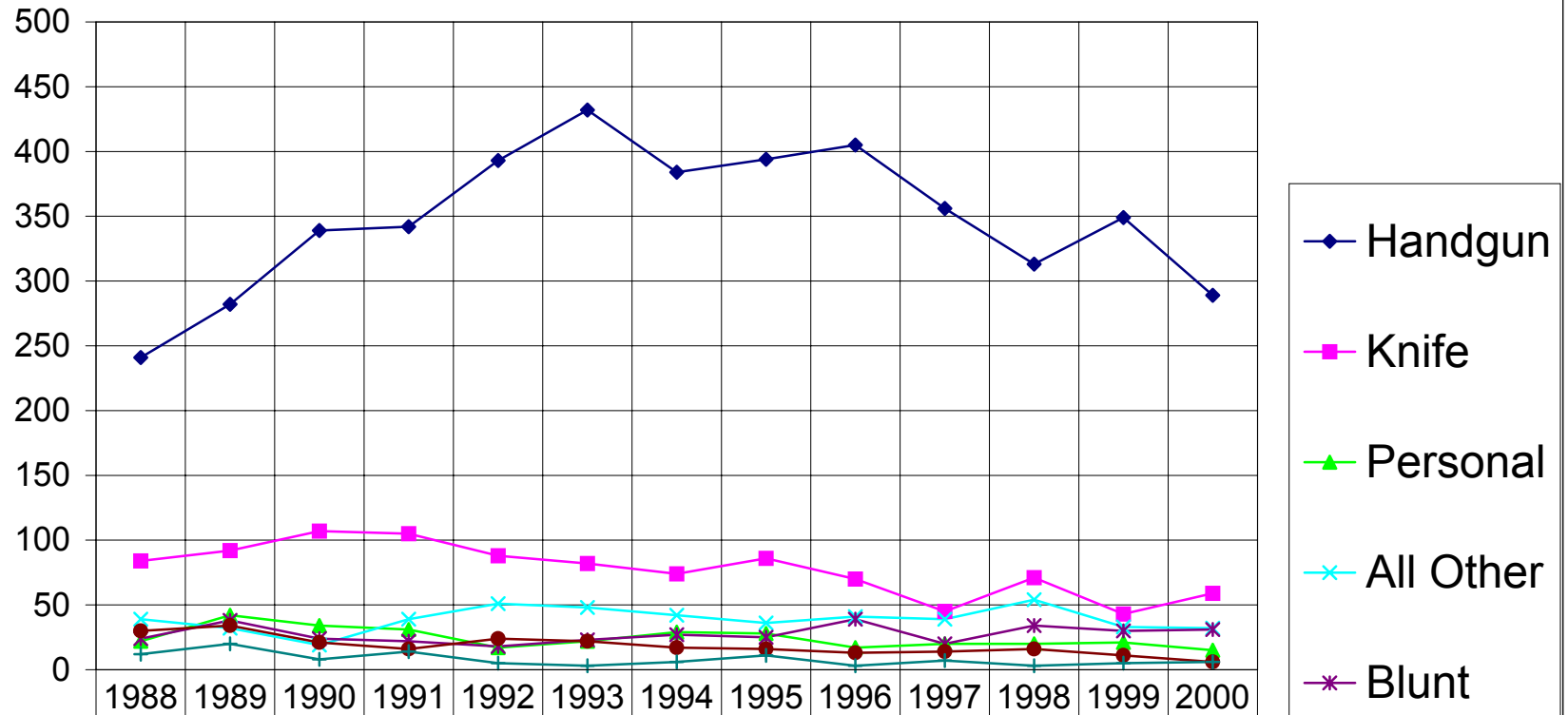
**MD Homicide UCR 75-00 D:** chart showing *per capita* homicide rates and average rates by county for the 26 year period from 1975 through 2000, the 13 year "pre gun control" period from 1975-1987, and the 13 year "gun control" period from 1988-2000.

## Comparison of National Homicide Rate to Maryland & Surrounding States 1975-2000 ( Handgun Control Inc.'s 2000 State Gun Law Grades in Parentheses)



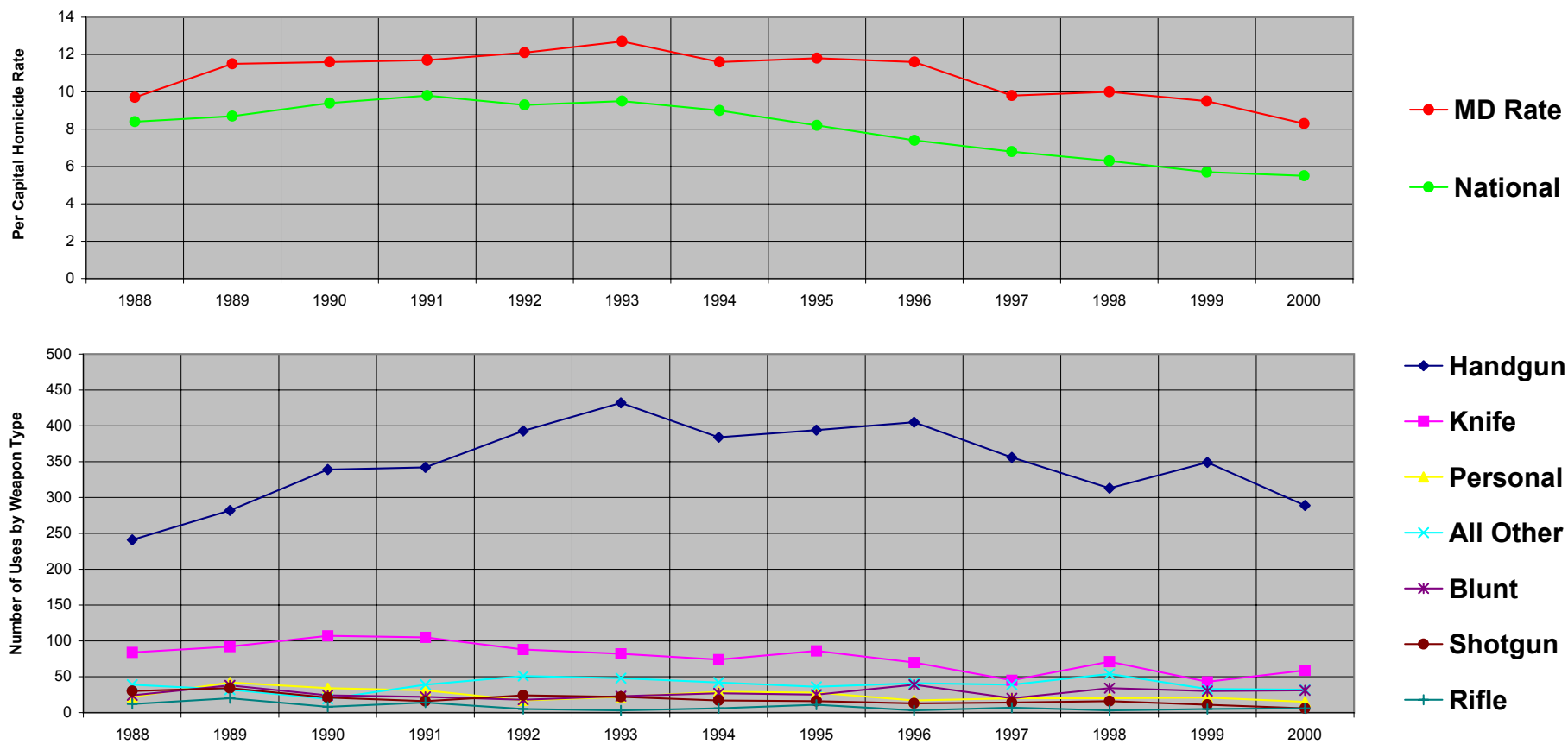
Associated Gun Clubs of Baltimore, Inc.  
Legislative Office

### Weapons Utilization in Homicides - Maryland Uniform Crime Reports 1988-2000



	1988	1989	1990	1991	1992	1993	1994	1995	1996	1997	1998	1999	2000
Handgun	241	282	339	342	393	432	384	394	405	356	313	349	289
Knife	84	92	107	105	88	82	74	86	70	45	71	43	59
Personal	22	42	34	31	17	22	29	28	17	20	20	21	15
All Other	39	32	19	39	51	48	42	36	41	39	54	33	32
Blunt	24	38	24	22	18	23	27	25	39	20	34	30	31
Shotgun	30	34	21	16	24	22	17	16	13	14	16	11	6
Rifle	12	20	8	14	5	3	6	11	3	7	3	5	6

## Maryland Homicide Weapons - Utilization Trends Comparison to Maryland & National Homicide Rates 1988-2000



## Homicide Rate Comparison 1988-2000 Maryland - Texas - National

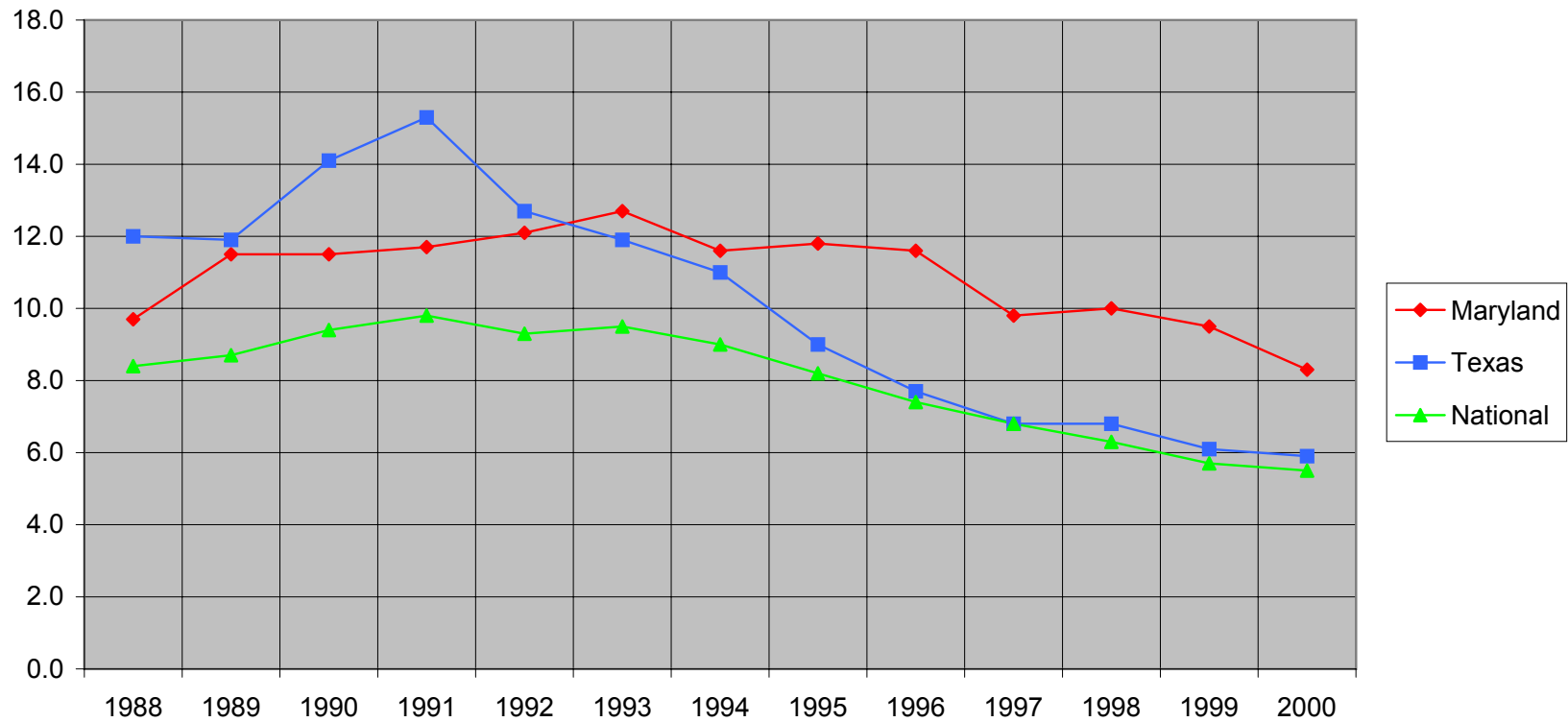


Chart	Maryland	Maryland State Police - Uniform Crime Reports - 1988 through 2000
Data	Texas	Texas Department of Public Safety - Crime in Texas 2000
Sources	National	Federal Bureau of Investigation Uniform Crime Reports
Notes:	1988 - Maryland enacted legislation banning so-called "cheap handguns"	
	1997 - Texas enacted "shall issue" concealed weapons permit legislation	

Associated Gun Clubs of Baltimore, Inc.  
Legislative Office  
410-296-3947 ~ agcbalto@bcpl.net

### Maryland Homicide Statistics - Maryland Uniform Crime Reports 1975-2000

Reporting Year	ARRESTS - DEMOGRAPHICS						HOMICIDE WEAPON DATA						
	Black	White	All Other Races	Male	Female	Juvenile	Handgun	Blunt Object	Rifle	Shotgun	Knife	Personal	All Other Weapons
1975	427	142	0	478	91	46	217	17	20	37	81	23	40
1976	326	109	0	383	52	35	151	24	15	37	86	16	23
1977	254	109	0	319	44	29	143	13	23	29	78	19	28
1978	235	74	0	281	28	40	156	10	5	24	94	33	16
1979	261	107	0	324	44	15	193	12	11	27	114	20	29
1980	270	121	0	352	39	43	187	17	25	21	108	18	23
1981	364	128	0	443	49	34	186	22	19	43	97	18	37
1982	306	119	0	387	38	43	200	20	20	37	89	27	38
1983	264	83	0	312	35	42	179	18	16	18	85	21	30
1984	299	100	0	358	40	36	162	18	11	26	81	20	36
1985	303	53	0	320	36	39	177	15	13	16	77	27	25
1986	293	93	0	344	42	31	204	24	10	21	83	21	36
1987	220	90	0	282	28	37	214	28	13	23	97	28	42
1988	295	98	0	338	55	51	241	24	12	30	84	22	39
1989	377	94	0	419	52	52	282	38	20	34	92	42	32
1990	485	87	6	519	58	81	339	24	8	21	107	34	19
1991	416	98	10	474	50	43	342	22	14	16	105	31	39
1992	453	68	0	492	29	104	393	18	5	24	88	17	51
1993	538	93	2	598	35	137	432	23	3	22	82	22	48
1994	505	82	1	558	30	103	384	27	6	17	74	29	42
1995	579	118	0	648	49	125	394	25	11	16	86	28	36
1996	561	77	6	600	45	148	405	39	3	13	70	17	41
1997	384	79	0	412	51	74	356	20	7	14	45	20	39
1998	617	110	7	669	66	74	313	34	3	16	71	20	54
1999	561	85	7	600	52	52	349	30	5	11	43	21	33
2000	326	67	1	366	32	56	289	31	6	6	59	15	32
<b>TOTAL</b>	<b>9918</b>	<b>2484</b>	<b>40</b>	<b>11277</b>	<b>1169</b>	<b>1569</b>	<b>6888</b>	<b>593</b>	<b>304</b>	<b>599</b>	<b>2176</b>	<b>609</b>	<b>908</b>
<b>AVERAGE</b>	<b>381</b>	<b>96</b>	<b>2</b>	<b>434</b>	<b>45</b>	<b>60</b>	<b>265</b>	<b>23</b>	<b>12</b>	<b>23</b>	<b>84</b>	<b>23</b>	<b>35</b>
<b>NOTE:</b>	Demographic totals and averages are based upon percentages listed in the MSP UCR and are approximate due to rounding.												
1988	Handgun Roster Board Law - ban on so-called "Saturday Night Specials" allegedly the criminal's weapons of choice												
1989	Assault Weapon Law - criminal background check and 7 day waiting period for the purchase of so-called "assault weapons"												
1990	Handgun roster Board bans all "derringers" under pressure from Marylanders Against Handgun Abuse (MAHA)												
1992	Firearm Child Access Law - requires all firearms to be locked up if an unsupervised minor would gain access to the firearm												
1993	"Gun Show Law" - private citizens must obtain a temporary dealer license to sell personal firearms at guns shows												
1994	Assault Pistol Act - ban on cosmetically offensive semi-automatic handguns												
1996	Maryland Gun Violence Act - 1 gun per month purchase limit for regulated firearms to eliminate "strawman" sales												
2000	Responsible Gun Safety Act 2000 - ballistic fingerprint, safety training, trigger locks, integrated mechanical child proof gun												



## Maryland Homicide Statistics - Maryland Uniform Crime Reports 1975-2000

Reporting Year	Homicides	Homicide Rate (per Capita)	Arrests	Clearance Rate (%)	ARRESTS - DEMOGRAPHIC PERCENTAGES						WEAPONS USED - PERCENTAGES						
					Black	White	All Other Races	Male	Female	Juvenile	Handgun	Blunt Object	Rifle	Shotgun	Knife	Personal	All Other Weapons
1975	435	10.6	569	84%	75%	25%	0%	84%	16%	8%	50%	4%	5%	9%	19%	5%	9%
1976	352	8.5	435	90%	75%	25%	0%	88%	12%	8%	43%	7%	4%	11%	24%	5%	7%
1977	333	8.0	363	83%	70%	30%	0%	88%	12%	8%	43%	4%	7%	9%	23%	6%	8%
1978	338	8.2	309	81%	76%	24%	0%	91%	9%	13%	46%	3%	1%	7%	28%	10%	5%
1979	406	9.8	368	76%	71%	29%	0%	88%	12%	4%	48%	3%	3%	7%	28%	5%	7%
1980	399	9.5	391	77%	69%	31%	0%	90%	10%	11%	47%	4%	6%	5%	27%	5%	6%
1981	422	9.9	492	81%	74%	26%	0%	90%	10%	7%	44%	5%	5%	10%	23%	4%	9%
1982	431	10.1	425	81%	72%	28%	0%	91%	9%	10%	46%	5%	5%	9%	21%	6%	9%
1983	367	8.5	347	77%	76%	24%	0%	90%	10%	12%	49%	5%	4%	5%	23%	6%	8%
1984	354	8.1	398	82%	75%	25%	0%	90%	10%	9%	46%	5%	3%	7%	23%	6%	10%
1985	350	8.0	356	78%	85%	15%	0%	90%	10%	11%	51%	4%	4%	5%	22%	8%	7%
1986	399	8.9	386	73%	76%	24%	0%	89%	11%	8%	51%	6%	3%	5%	21%	5%	9%
1987	445	9.8	310	73%	71%	29%	0%	91%	9%	12%	48%	6%	3%	5%	22%	6%	9%
1988	452	9.7	393	72%	75%	25%	0%	86%	14%	13%	53%	5%	3%	7%	19%	5%	9%
1989	540	11.5	471	71%	80%	20%	0%	89%	11%	11%	52%	7%	4%	6%	17%	8%	6%
1990	552	11.5	577	75%	84%	15%	1%	90%	10%	14%	61%	4%	1%	4%	19%	6%	3%
1991	569	11.7	524	69%	79%	19%	2%	90%	10%	8%	60%	4%	2%	3%	18%	5%	7%
1992	596	12.1	521	67%	87%	13%	0%	94%	6%	20%	66%	3%	1%	4%	15%	3%	9%
1993	632	12.7	633	72%	85%	15%	0%	95%	5%	22%	68%	4%	0%	3%	13%	3%	8%
1994	579	11.6	588	67%	86%	14%	0%	95%	5%	18%	66%	5%	1%	3%	13%	5%	7%
1995	596	11.8	697	69%	83%	17%	0%	93%	7%	18%	66%	4%	2%	3%	14%	5%	6%
1996	588	11.6	645	61%	87%	12%	1%	93%	7%	23%	69%	7%	1%	2%	12%	3%	7%
1997	501	9.8	463	63%	83%	17%	0%	89%	11%	16%	71%	4%	1%	3%	9%	4%	8%
1998	511	10.0	735	68%	84%	15%	1%	91%	9%	10%	61%	7%	1%	3%	14%	4%	11%
1999	492	9.5	652	46%	86%	13%	1%	92%	8%	8%	71%	6%	1%	2%	9%	4%	7%
2000	438	8.3	398	68%	82%	17%	1%	92%	8%	14%	66%	7%	1%	1%	13%	3%	7%
TOTAL	12,077		12,446														
AVERAGE	465	10.0	479	73%	79%	21%	0%	90%	10%	12%	55%	5%	3%	5%	19%	5%	8%

Associated Gun Clubs of Baltimore, Inc.

Legislative Office

410-296-3947 ~ agcbalto@bcpl.net

**Homicides - Maryland - Statewide Totals & Totals by County - Maryland Uniform Crime Reports 1975-2000 Plus Totals 1975-1987 & 1988-2000**

Reporting Year	Total Homicides Statewide	Allegany County	Anne Arundel County	Baltimore County	Calvert County	Caroline County	Carroll County	Cecil County	Charles County	Dorchester County	Frederick County	Garrett County	Harford County	Howard County	Kent County	Montgomery County	Prince George's County	Queen Anne's County	St. Mary's County	Somerset County	Talbot County	Washington County	Wicomico County	Worcester County	Baltimore City
1975	435	3	16	27	5	1	2	2	3	3	4	2	6	6	0	21	52	5	3	2	2	5	4	0	259
1976	352	2	10	22	2	3	1	3	7	4	8	0	2	3	0	28	38	1	3	1	1	3	7	3	200
1977	333	3	16	26	3	3	1	4	1	1	4	1	2	3	0	15	54	0	7	4	1	2	10	1	171
1978	338	1	17	29	1	1	2	1	9	1	4	0	3	1	2	12	37	1	4	1	1	2	4	4	199
1979	406	1	13	23	1	3	2	2	4	5	4	2	8	3	0	17	51	0	4	0	3	7	4	4	245
1980	399	2	20	26	3	2	1	6	7	6	2	1	3	5	0	17	56	0	3	0	4	2	13	4	216
1981	422	11	23	32	4	3	3	4	2	3	4	0	6	5	1	13	61	0	0	4	0	4	7	3	228
1982	431	1	19	34	2	1	1	1	4	3	1	0	6	7	0	20	76	2	7	4	1	6	3	3	227
1983	367	5	13	34	0	0	1	1	5	2	5	1	7	1	0	16	58	1	1	1	3	3	2	6	201
1984	354	2	16	28	2	1	0	2	1	0	6	0	2	7	0	14	42	0	5	0	0	5	4	2	215
1985	350	0	16	24	2	3	0	3	3	2	3	2	2	5	0	12	47	1	1	0	3	0	5	3	213
1986	399	1	20	31	1	1	0	1	2	2	2	1	5	3	1	8	52	2	0	3	0	6	10	5	240
1987	444	2	19	32	0	0	5	4	4	4	1	1	9	6	0	17	94	2	2	3	5	1	3	4	226
1988	452	4	18	24	1	0	4	2	5	1	6	1	10	2	1	19	101	1	4	1	2	4	2	2	237
1989	540	2	20	33	6	0	1	3	9	4	5	1	11	10	2	21	122	1	4	1	3	10	9	3	259
1990	553	0	16	34	1	1	1	3	8	5	5	1	6	7	1	25	112	1	1	4	0	3	9	3	305
1991	569	1	12	25	3	3	5	2	6	1	2	2	3	8	0	26	147	1	6	1	1	2	5	2	304
1992	596	1	12	43	1	1	1	0	7	0	3	0	6	6	0	21	134	2	3	1	2	2	8	4	335
1993	632	1	22	36	4	3	4	5	5	2	4	1	0	5	0	30	141	1	3	0	1	5	3	1	352
1994	579	2	11	31	2	2	2	2	3	0	10	0	6	4	1	34	127	0	2	1	1	9	2	2	321
1995	596	1	17	38	1	0	1	2	10	2	4	1	5	3	0	21	137	0	3	5	1	5	4	4	325
1996	588	2	16	34	0	2	1	2	11	0	4	1	6	5	0	13	142	1	3	1	4	1	3	2	333
1997	501	1	12	23	2	0	3	1	4	1	2	0	3	1	1	23	83	1	3	3	6	6	7	2	313
1998	511	2	7	20	1	0	2	5	4	2	1	0	9	6	0	13	107	2	5	2	1	3	4	1	315
1999	492	0	7	30	4	3	2	0	2	5	1	0	6	6	3	13	95	0	2	0	1	4	4	2	305
2000	438	2	11	33	2	0	1	1	4	0	6	1	4	7	0	12	72	2	5	0	3	6	4	0	261
1975-2000 TOTAL	12,077	53	399	772	54	37	47	62	130	59	101	20	136	125	13	481	2238	28	84	43	50	106	140	70	6805
75-00 AVERAGES	465	2.0	15.3	29.7	2.1	1.4	1.8	2.4	5.0	2.3	3.9	0.8	5.2	4.8	0.5	18.5	86.1	1.1	3.2	1.7	1.9	4.1	5.4	2.7	261.7
% OF 1975-2000 TOTAL	0.44%	3.30%	6.39%	0.45%	0.31%	0.39%	0.51%	1.08%	0.49%	0.84%	0.17%	1.13%	1.04%	0.11%	3.98%	18.53%	0.23%	0.70%	0.36%	0.41%	0.88%	1.16%	0.58%	56.35%	
1975-1987 TOTAL	5,030	34	218	368	26	22	19	34	52	36	48	11	61	55	4	210	718	15	40	23	24	46	76	42	2,840
75-87 AVERAGES	387	2.6	16.8	28.3	2.0	1.7	1.5	2.6	4.0	2.8	3.7	0.8	4.7	4.2	0.3	16.2	55.2	1.2	3.1	1.8	1.8	3.5	5.8	3.2	218.5
% OF 1975-1987 TOTAL	0.68%	4.33%	7.32%	0.52%	0.44%	0.38%	0.68%	1.03%	0.72%	0.95%	0.22%	1.21%	1.09%	0.08%	4.17%	14.27%	0.30%	0.80%	0.46%	0.48%	0.91%	1.51%	0.83%	56.46%	
1988-2000 TOTAL	7,047	19	181	404	28	15	28	28	78	23	53	9	75	70	9	271	1520	13	44	20	26	60	64	28	3965
88-00 AVERAGES	542	1.5	13.9	31.1	2.2	1.2	2.2	2.2	6.0	1.8	4.1	0.7	5.8	5.4	0.7	20.8	116.9	1.0	3.4	1.5	2.0	4.6	4.9	2.2	305.0
% OF 1988-2000 TOTAL	0.27%	2.57%	5.73%	0.40%	0.21%	0.40%	0.40%	1.11%	0.33%	0.75%	0.13%	1.06%	0.99%	0.13%	3.85%	21.57%	0.18%	0.62%	0.28%	0.37%	0.85%	0.91%	0.40%	56.27%	

## Homicide Rates - Maryland - Per Capita by County - Maryland Uniform Crime Reports 1975-2000 & 1988-2000

Note: Homicide data by county prior to 1992 provided by UCR Central Records Division of the MSP

Reporting Year	Statewide Homicide Rate	Allegany County	Anne Arundel County	Baltimore County	Calvert County	Caroline County	Carroll County	Cecil County	Charles County	Dorchester County	Frederick County	Garrett County	Harford County	Howard County	Kent County	Montgomery County	Prince George's County	Queen Anne's County	St. Mary's County	Somerset County	Talbot County	Washington County	Wicomoco County	Worcester County	Baltimore City
1975	10.6	3.8	4.8	4.2	19.3	5.0	2.5	3.7	5.4	10.4	4.3	8.8	4.6	6.3	0.0	3.7	7.6	24.4	5.5	11.1	8.0	4.7	7.0	0.0	30.0
1976	8.5	2.4	2.9	3.4	7.5	13.7	1.2	5.3	11.7	13.4	8.2	0.0	1.5	3.1	0.0	4.9	5.5	4.9	5.9	5.1	3.9	2.8	11.7	11.2	23.2
1977	8.0	3.7	4.6	4.0	10.9	13.3	1.2	7.3	1.5	3.3	4.0	4.0	1.4	2.9	0.0	2.6	8.0	0.0	13.1	20.4	3.9	1.8	16.6	3.7	20.7
1978	8.2	1.3	4.7	4.5	3.3	4.4	2.2	1.8	13.6	3.3	3.9	0.0	2.0	0.9	12.0	2.1	5.5	4.5	7.5	5.0	3.8	1.8	6.6	14.4	25.5
1979	9.8	1.3	3.6	3.6	3.2	13.3	2.2	3.5	6.0	16.3	3.7	7.7	5.5	2.6	0.0	2.9	7.7	0.0	7.4	0.0	11.2	6.4	6.6	14.4	31.0
1980	9.5	2.5	5.4	4.0	8.7	8.6	1.0	10.0	9.7	19.6	1.8	3.8	2.1	4.2	0.0	3.0	8.5	0.0	5.0	0.0	15.7	1.8	20.0	13.2	27.5
1981	9.9	13.5	6.1	4.8	11.5	12.8	3.1	6.5	2.7	9.7	3.5	0.0	4.1	4.2	5.9	2.2	9.1	0.0	0.0	20.7	0.0	3.5	10.6	9.7	28.6
1982	10.1	1.2	5.0	5.1	5.7	4.2	1.0	1.6	5.4	9.7	0.9	0.0	4.1	5.8	0.0	3.4	11.4	7.7	11.5	20.6	3.9	5.2	4.5	9.7	28.4
1983	8.5	6.1	3.4	5.1	0.0	0.0	1.0	1.6	6.7	6.4	4.3	3.7	4.7	0.8	0.0	2.7	8.6	3.8	1.6	5.1	11.5	2.6	3.0	19.3	25.0
1984	8.1	2.5	4.1	4.2	5.4	4.2	0.0	3.1	1.3	0.0	4.9	0.0	1.3	5.4	0.0	2.3	6.2	0.0	8.0	0.0	0.0	4.4	6.0	6.3	27.3
1985	8.0	0.0	4.1	3.5	5.0	12.6	0.0	4.5	3.6	6.6	2.4	7.4	1.3	3.6	0.0	1.9	6.9	3.6	1.6	0.0	11.1	0.0	7.5	8.9	27.6
1986	8.9	1.3	5.0	4.5	2.5	4.1	0.0	1.5	2.4	6.5	1.6	3.6	3.2	2.2	5.8	1.2	7.5	7.0	0.0	15.7	0.0	5.2	14.8	14.6	30.6
1987	9.8	2.6	4.6	4.7	0.0	0.0	4.4	5.8	4.4	13.2	0.7	3.7	5.6	3.9	0.0	2.5	13.6	6.6	2.9	15.3	18.1	0.9	4.3	10.9	29.5
1988	9.7	5.2	4.3	3.5	2.1	0.0	3.4	2.8	5.2	3.3	4.3	3.7	6.0	1.2	5.7	2.7	14.4	3.1	5.6	5.0	7.0	3.4	2.8	5.3	31.0
1989	11.5	2.6	4.7	4.7	12.3	0.0	0.8	4.1	9.3	13.0	3.5	3.7	6.4	6.0	11.6	2.9	17.1	3.1	5.6	5.1	10.5	8.4	12.3	8.0	33.9
1990	11.5	0.0	3.7	4.9	1.9	3.7	0.8	4.2	7.9	16.5	3.3	3.6	3.3	3.7	5.6	3.3	15.4	2.9	1.3	17.1	0.0	2.5	12.1	8.6	41.4
1991	11.7	1.3	2.8	3.6	5.7	10.9	4.0	2.8	5.8	3.3	1.3	7.0	1.6	4.2	0.0	3.4	19.8	2.9	7.8	4.2	3.2	1.6	6.6	5.6	40.6
1992	12.1	1.3	2.7	6.1	1.9	3.6	0.8	0.0	6.7	0.0	1.9	0.0	3.2	3.1	0.0	2.7	17.9	5.7	3.8	4.2	6.4	1.6	10.5	11.1	44.3
1993	12.7	1.3	4.9	5.1	6.9	10.6	3.0	6.6	4.7	6.6	2.5	3.4	0.0	2.5	0.0	3.8	18.6	2.8	3.7	0.0	3.2	3.9	3.9	2.7	48.2
1994	11.6	2.6	2.4	4.3	3.4	7.0	1.5	2.6	2.8	0.0	6.1	0.0	3.0	2.0	5.3	4.3	16.6	1.0	2.5	4.2	3.1	7.0	2.6	5.3	43.4
1995	11.8	1.3	3.7	5.3	6.4	0.0	0.7	2.6	9.1	6.5	2.3	3.4	2.5	1.4	0.0	2.6	17.9	1.0	3.7	20.9	3.1	3.9	5.1	10.2	45.6
1996	11.6	2.7	3.5	4.7	1.6	6.9	0.7	2.6	9.9	0.0	2.3	3.4	2.9	2.3	0.0	1.6	18.4	2.7	3.7	4.2	12.3	8.0	3.8	5.1	46.5
1997	9.8	1.3	2.6	3.2	3.2	0.0	2.2	1.3	3.6	3.2	1.1	0.0	1.5	0.5	5.3	2.8	10.8	2.7	3.7	12.4	18.4	4.7	8.8	5.0	43.5
1998	10.0	2.7	1.5	2.8	0.0	0.0	1.4	6.1	3.4	6.6	0.5	0.0	4.2	2.6	0.0	1.6	13.8	5.1	5.8	8.1	3.0	2.3	5.0	2.4	47.6
1999	9.5	0.0	1.5	4.1	1.4	10.1	1.3	0.0	1.7	16.8	0.5	0.0	2.8	2.5	15.7	1.5	12.1	0.0	2.3	0.0	3.0	3.1	5.0	4.6	46.9
2000	8.3	2.7	2.2	4.4	2.7	0.0	0.7	1.2	3.3	0.0	3.1	3.4	1.8	2.8	0.0	1.4	9.0	4.9	5.8	0.0	8.9	4.5	4.7	0.0	40.1
1975-2000 AVERAGE	10.0	2.6	3.8	4.3	5.1	5.7	1.6	3.6	5.7	7.5	3.0	2.9	3.1	3.1	2.8	2.7	11.8	3.9	4.8	7.9	6.7	3.7	7.8	8.1	34.9
1975-1987 AVERAGE	9.1	3.2	4.5	4.3	6.4	7.4	1.5	4.3	5.7	9.1	3.4	3.3	3.2	3.5	1.8	2.7	8.2	4.8	5.4	9.2	7.0	3.2	9.2	10.5	27.3
1988-2000 AVERAGE	10.9	1.9	3.1	4.4	3.8	4.1	1.6	2.8	5.6	5.8	2.5	2.4	3.0	2.7	3.8	2.7	15.5	2.9	4.3	6.6	6.3	4.2	6.4	5.7	42.5